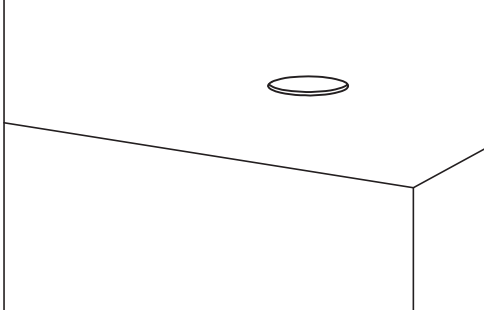


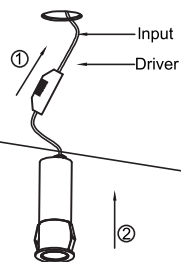
### Connecting the Terminal Block

Connect main supply (brown - Live, blue - Neutral) into terminal block making sure all connections are tight.

Installation Step  
First : Cutting a Ø38 hole on the ceiling . Application range of ceiling thickness : 7-10mm



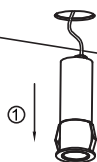
Second : Connect the Lamp with AC power and push the lamp into the ceiling.



Third : Installation complete.



Disassemble Step : Catch and hold the lamp and pull it out .



## DOWNLIGHT RECESSED SPOT

S184

Please read instructions before commencing installation and retain for future reference.

### SPECIFICATIONS

- **Material:** Aluminium
- **Lamp Type:** LED | 7.5W | 36V | 180mA | 2700K | 466Lm | CRI 90
- **Ingress Protection:** IP20 Protection against entry of solid objects greater than 12mm in diameter.

### INSTALLATION INSTRUCTIONS

- ⚠ Electrical products can cause death, injury, or property damage. Maintenance and installation should only be carried out by a professional electrician.
- Ensure the main supply is switched off.
- Cutting hole Ø 3.8cm on the ceiling.  
Application range of ceiling thickness 7-10mm.  
Depth required 10.5cm.
- Connect the recessed downlight spot with AC power and push it into the ceiling.  
Suggested On-Off Driver (D-OT FIT8 pass from the hole).  
Suggested DALI Driver (4062172151252 remote application).
- Reconnect power.

### WARNING

- ⚠ Make sure that the products are installed properly before connecting to electricity.  
Do not cover the luminaire with thermally insulating material.  
Do not exceed the maximum wattage rating of the lamp.  
If the light source is contained in this luminaire (integrated LED), it shall only be replaced by the manufacturer, his service agent, or a similarly qualified person.

